



The Complete

# Excise Management

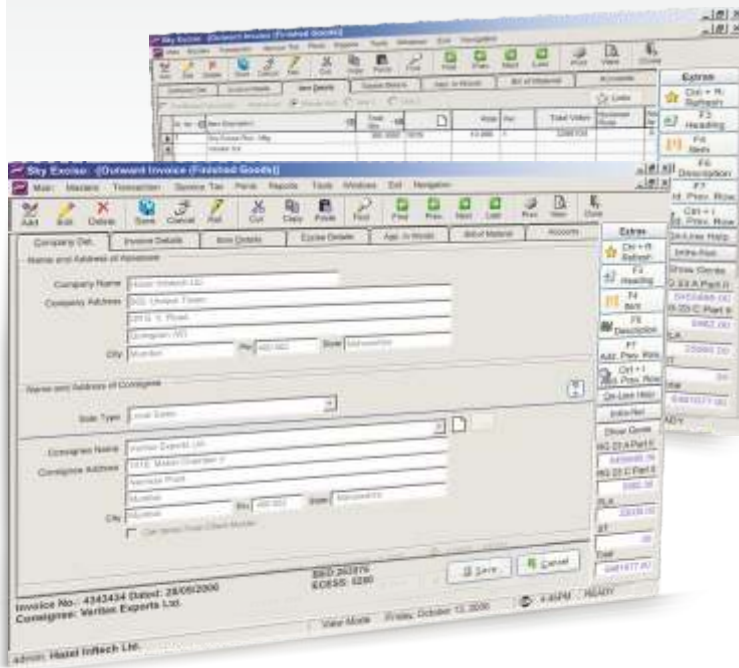
Software for Manufacturers

End-to-end  
**EXCISE** solution

*Sky...*  
**Excise Plus**<sup>®</sup>  
Your Official e-Excise Consultant

# The Complete Excise Management Software

Sky Excise Plus<sup>®</sup> is a comprehensive software that lets you gain better control in business operations related to excise. Built on three modules Excise, Order Processing and Service Tax, the software is designed to reduce overheads, improve efficiency and manage non-core business functions.



Sky Excise Plus<sup>®</sup> has been developed by experts after continuous interaction and consultation with executives from manufacturing and excise sector.

How it works?

With simple user-interface, navigation, updates and data management, Sky Excise Plus<sup>®</sup> is an absolute advantage. All one has to do is key in data once, and the records get updated automatically along with statutory documents.

Get ready for the big change

In terms of efficiency, Sky Excise Plus<sup>®</sup> is miles ahead of your conventional Excise Consultant.

It not only helps you keep track of your day-to-day excise statutory requirements but also ensures a smooth flow of operations

## Features:

- ❖ State-of-the-art and user-friendly interface
- ❖ Provides ready framework for migrating from manual system to automated computerized environment
- ❖ Assures timely compliance necessary to meet Government requirements for updating registers and filing of returns
- ❖ Auto posting of data entries, maintenance and generation of registers and returns that reduces 85% of duplication of work
- ❖ More flexibility and accuracy due to computerized Documents, Registers, Returns
- ❖ Integration with standard accounting software
- ❖ User level security system
- ❖ Export documents to Word, Excel and PDF formats
- ❖ Online CENVAT available/payable

## Functionality:

- ❖ Auto Numbering facility for master data input forms
- ❖ MRP based calculation
- ❖ Amortization Rate calculation
- ❖ Excise Returns on single click
- ❖ Manual or Auto debit of Cenvat duties
- ❖ User-defined field creation in Masters as well as Documents to enable users to add more fields

## Inventory

- ❖ Complete Inventory control for RM/CG/FG
- ❖ Control based on lot and batch number
- ❖ Unit Conversion
- ❖ Bill of Material for production from Own factory/Job work
- ❖ Check for Negative Stock
- ❖ Re-Order alarming

## I. Order Processing

### Functionality

- ❖ Purchase Requisition Slip
- ❖ Inquiry Sent
- ❖ Quotation Received
- ❖ Purchase Order
- ❖ GRN
- ❖ Job Requisition

### Reports

- ❖ MRN Report
- ❖ Pending Requisitions
- ❖ Pending Quotations
- ❖ Pending Po's
  - Product wise
  - Party wise
  - Party - Product wise
- ❖ GRN Report
  - Party wise
  - Item wise
- ❖ Compare price on runtime with past orders of same or different suppliers



## II. Excise

### Functionality

- ❖ Inward of:
  - Raw Material
  - Capital Goods
  - Finished Goods
  - Sales Return
- ❖ Issue for Production to:
  - Own Factory
  - Job Worker
  - Reprocessing / Remade
- ❖ Receipt of Production from:
  - Own Factory
  - Job worker
  - Reprocessing / Remade
- ❖ Received for Job Work:
  - Received for Job Work
  - Issue from Job work
  - Dispatch Challan
  - Job work Invoice
- ❖ Inward Purchase Order (Sales Order)
- ❖ Delivery Challan:
  - Direct
  - From Purchase Order
- ❖ Excise Invoice:
  - Finished Goods
    - Direct
    - From Delivery Challan
    - Supplementary Invoice
    - Captive Invoice
    - Sale of Sales Return Goods
    - Commercial Invoice
  - Raw Material
  - Capital Goods
- ❖ Other Documents
  - Form 402/403/404
  - Form R
  - Nepal Invoice
  - Test Report
  - Letter to Superintendent for Duty Payable
- ❖ GAR 7 Challan

## Returns and Registers

- ❖ RG1
- ❖ RG23A Part I / II
- ❖ RG23C Part I / II
- ❖ Combine RG23A Part I / II and RG23C Part I / II
- ❖ PLA
- ❖ Annexure (Rule 7) / Annexure D
- ❖ Form IV (Account for Non Cenvatable material)
- ❖ Form V (Goods received for Reprocessing / Remade)
- ❖ Form RG16 (Register of Goods used for Special Industrial Purpose)
- ❖ Annexure B1
- ❖ Annexure B (Register for Concessional rate of Duty)
- ❖ Form DVAT 30/31
- ❖ ER1
- ❖ ER2
- ❖ ER3
- ❖ ER5
- ❖ ER6
- ❖ ER7
- ❖ ER1 weekly



## Reports

- ❖ Item/Vendor/Client Master
- ❖ Pending purchase Orders (Sales)
- ❖ Daily Production Report
- ❖ Purchase/Sales Register
  - Normal Report
  - Export to Excel
- ❖ Duty payable Report
- ❖ Credit pending Report
- ❖ Inventory control
  - For RM / CG / FG
  - Product Name wise/Group wise/ Sub group wise
  - Detailed / Summarized
  - Periodical
  - With / without Valuation
  - Re-Order Level Status
  - In Plant (WIP) Stock Report
  - Daily Stock Report
  - Lot No./Batch No. wise status
  - Raw Material Consumption Report
- ❖ Client wise detailed sales analysis
- ❖ Client wise summarized sales report (Normal / Graphical)
- ❖ Vendor wise detailed purchase analysis
- ❖ Vendor wise summarized purchase report (Normal / Graphical)
- ❖ 'C' Form received/pending status report
- ❖ Location wise Inventory

## III. Export

- ❖ ARE1
- ❖ ARE2
- ❖ ARE3
- ❖ AR3 A
- ❖ Form CT1
- ❖ Form CT3
- ❖ Form C
- ❖ Form UT1
- ❖ Proof of Export
- ❖ Annexure 19





## IV. Labour Job

- ❖ Annexure IV for Raw Material / Semi-Finished goods sent for Jobwork
- ❖ Annexure V for Raw Material / Semi-Finished goods received for Job work
- ❖ Annexure VI under Rule 57C subsidiary challan for sending goods in piecemeal
- ❖ Annexure II challan for removal of Raw Material under rule 4(5)(a)
- ❖ Labour Job Unit
- ❖ Job work Status (Open / Closed)
- ❖ Job work stock report
- ❖ Job work Invoice wise RM consumption status

## V. Service Tax

### Functionality

- ❖ Input Services
- ❖ Input Services with abatement rate (Import/GTA services)
- ❖ Output Services
- ❖ Service Payment
- ❖ GAR 7 Challan
- ❖ Form ST3

### Reports

- ❖ Service Tax Register
- ❖ Client wise / Vendor wise analysis

## Advantages of Sky Excise Plus®

The difference between ordinary and excellent is miniscule. Excellence is not a singular act, but a habit. You become what you repeatedly do. By embedding our product with minor advantages over other products, we have made it a habit to present our customers with only the best. Sky Excise Plus® MFG is no exception to this work philosophy of ours. It is powered by numerous advantages that make it significant for the export industry.

- ❖ Reducing overhead
- ❖ Auto posting of data to registers
- ❖ Avoiding capital expenses
- ❖ Improving efficiency
- ❖ Off-loading non-core functions
- ❖ Getting access to specialized skills
- ❖ Saving on manpower and training costs
- ❖ Reducing operating costs
- ❖ Improving speed and service
- ❖ Being reliable and innovative
- ❖ Increasing customer satisfaction
- ❖ Avoiding the cost of chasing technology





## Hazel Mercantile Limited

202/602, Unique Tower, Off S. V. Road,  
Goregaon (West), Mumbai - 400 062. INDIA  
Tel: +91- 22 - 4226 4444/2876 4449,  
Fax: +91- 22 - 4226 4440/2876 4494  
info@hazelifotech.com

### Corporate Office:

701/712A, Embassy Center,  
Nariman Point, Mumbai - 400021. INDIA  
Tel: +91 - 22 - 2282 4444/4009 8900  
Fax: +91- 22- 2282 4440/2204 1411.  
info@hazelifotech.com

[www.hazelifotech.com](http://www.hazelifotech.com)

TOLL FREE

1800 103 4440

**Microsoft**<sup>®</sup>  
GOLD CERTIFIED  
Partner



A Groupe  Veritas<sup>®</sup> Enterprise

Agartala | Ahmedabad | Bhopal | Chennai | Cochin | Daman | Delhi | Faridabad | Hyderabad | Jaipur | Kakinada | Kandla | Kolkata | Mumbai | Nagpur | Surat | Vapi  
Accra | Amsterdam | Antwerpen | Cairo | Colombo | Dubai | Hong Kong | Lagos | London | Maputo | Nairobi | Shanghai | Sharjah | Singapore

Copyright © Hazel Mercantile Limited - 2014. All rights reserved and other names & logos may be property of their respective owners and used for identification purpose only.